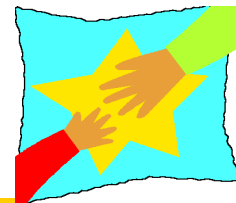


SAVE THE DATE! 13TH ANNUAL CONFERENCE ON INFANT MENTAL HEALTH



Ethics in Early Childhood Fields: A Moral Psychological Approach

Working with families is complex and can present a number of potential challenges to maintaining ethical practice. Join the IAITMH for a thought-provoking day of presentations commencing with an expert overview of moral psychology, progressing to interactive sessions, and onto practical talk about ethics, moral dilemmas and professional conscience as related to our work with very young children and families.

Keynote Presenters:

*Darcia Narváez, PhD and
Daniel Lapsley, PhD
University of Notre Dame*

*With the Support and
Participation of the Indiana
University School of
Medicine's Conscience Project
Margaret Gaffney, MD,
Director, Conscience Project*

*Angela Tomlin, PhD and
Matthew Galvin, MD,
Conference Course Co-Directors*

Indiana Association for
Infant & Toddler Mental Health
1431 North Delaware St
Indpls., IN 46202

Phone: 317-638-3501, Ext. 228

E-mail: info@iaitmh.org



When: Friday August 12, 2011

Where: Riley Outpatient Center
Ruth Lilly Auditorium
Indianapolis, IN 46202

Cost: Member Rate: \$70
Non-Member Rate: \$100

Renew or Join for only \$25 with paid registration; Save ½ off a regular membership!

Registration details coming soon!